

# STORM

**LEA**  
CERAMICHE







## **Storm straordinario protagonista.**

**Le forze della natura imprigionate in una collezione unica.**

**Storm è realizzato con la rivoluzionaria tecnologia produttiva LEA FULL HD che coniuga lo straordinario know-how sviluppato negli anni da Lea Ceramiche con la decorazione digitale. Ogni articolo prodotto esprime una impressionante e inedita naturalezza grazie al numero di pezzi ciascuno diverso dall'altro.**

## **Storm extraordinary participant.**

**The forces of nature imprisoned in a unique collection.**

**Storm is produced using the revolutionary LEA FULL HD technology, that combines Lea Ceramiche's know-how and digital decoration. Each item produced expresses an impressive, pure naturalness due to the number of pieces, each different from the others.**





**TROPICALSTORM 60x60cm - 23.6x23.6"**









**ICESTORM 30x60cm - 11.8x23.6" / 60x60cm - 23.6x23.6"**  
**ICESTORM MURETTO 30x60cm - 11.8x23.6" / ICESTORM MOSAICO 3 30x30cm - 11.8x11.8"**







ICESTORM 30x60cm - 11.8x23.6"







**ICESTORM MURETTO 30x60cm - 11.8x23.6"**





**DARKSTORM 60x60cm - 23.6x23.6"**





**FORMATI E COLORI**  
**SIZES AND COLORS**  
**FORMATS ET COULEURS**  
**FORMATE UND FARBEN**

icestorm



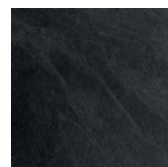
30x30cm 11.8x11.8"  
 nat. rett. LGPS2R4 1470  
 nat. (spessore 9mm) LGPS240 0970

tropicalstorm



30x30cm 11.8x11.8"  
 nat. rett. LGPS2R3 1470  
 nat. (spessore 9mm) LGPS230 0970

darkstorm



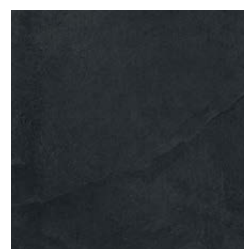
30x30cm 11.8x11.8"  
 nat. rett. LGPS2R5 1470  
 nat. (spessore 9mm) LGPS250 0970



45x45cm 17.7x17.7"  
 nat. (spessore 9mm) LGTS2N4 1080



45x45cm 17.7x17.7"  
 nat. (spessore 9mm) LGTS2N3 1080



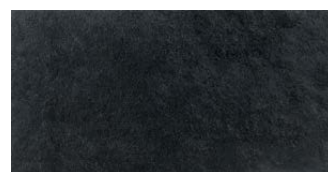
45x45cm 17.7x17.7"  
 nat. (spessore 9mm) LGTS2N5 1080



30x60cm 11.8x23.6" nat. rett. LGVS2R4 1470  
 30x60,4cm 11.8x23.8" nat. LGVS240 0970



30x60cm 11.8x23.6" nat. rett. LGVS2R3 1470  
 30x60,4cm 11.8x23.8" nat. LGVS230 0970



30x60cm 11.8x23.6" nat. rett. LGVS2R5 1470  
 30x60,4cm 11.8x23.8" nat. LGVS250 0970



60x60cm 23.6x23.6"  
 nat. LGWS240 1270  
 nat. rett. LGWS2R4 1470



60x60cm 23.6x23.6"  
 nat. LGWS230 1270  
 nat. rett. LGWS2R3 1470



60x60cm 23.6x23.6"  
 nat. LGWS250 1270  
 nat. rett. LGWS2R5 1470

**10** FINITURA ANTISLIP (vedi pagina 2): su richiesta è possibile acquistare la versione antislip per tutti i colori della serie. Per maggiori informazioni circa formati disponibili, prezzi, quantità minime e tempi di consegna rivolgersi all'ufficio commerciale. / ANTISLIP FINISH : upon request you can purchase the antislip finish for all the colors of the series. For more information about available sizes, prices, minimum quantities and delivery times please contact the sales department. / VERSION ANTISLIP: sur demande, vous pouvez acheter en version antislip toutes les couleurs de la série. Pour plus d'informations sur les formats disponibles, les prix, les quantités minimales et délais de livraison s'il vous plaît contacter le département des ventes.

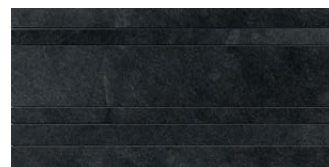




**LISTONE LINK**  
 icestorm  
 30x60cm 11.8x23.6" LG9S218 1940



**LISTONE LINK**  
 tropicalstorm  
 30x60cm 11.8x23.6" LG9S217 1940



**LISTONE LINK**  
 darkstorm  
 30x60cm 11.8x23.6" LG9S219 1940



**MURETTO**  
 icestorm  
 30x60cm 11.8x23.6" LG9S213 1960



**MURETTO**  
 tropicalstorm  
 30x60cm 11.8x23.6" LG9S212 1960



**MURETTO**  
 darkstorm  
 30x60cm 11.8x23.6" LG9S214 1960



**DECORO MURETTO 3D**  
 icestorm  
 15x60cm 5.9x23.6" LG9S251 0600



**DECORO MURETTO 3D**  
 tropicalstorm  
 15x60cm 5.9x23.6" LG9S254 0600



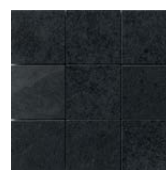
**DECORO MURETTO 3D**  
 darkstorm  
 15x60cm 5.9x23.6" LG9S250 0600



**MOSAICO 10**  
 icestorm  
 30x30cm 11.8x11.8" LG9S203 1600



**MOSAICO 10**  
 tropicalstorm  
 30x30cm 11.8x11.8" LG9S202 1600



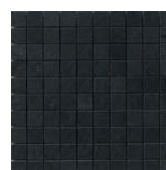
**MOSAICO 10**  
 darkstorm  
 30x30cm 11.8x11.8" LG9S204 1600



**MOSAICO 3**  
 icestorm  
 30x30cm 11.8x11.8" LG9S208 2070



**MOSAICO 3**  
 tropicalstorm  
 30x30cm 11.8x11.8" LG9S207 2070

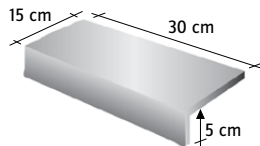


**MOSAICO 3**  
 darkstorm  
 30x30cm 11.8x11.8" LG9S209 2070

**PEZZI SPECIALI**  
**SPECIAL PIECES**  
**PIÈCES SPÉCIALES**  
**FORMSTÜCKE**



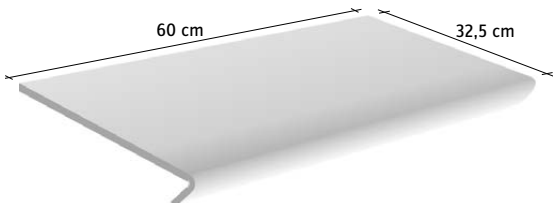
**BATTISCOPA** nat. rett.  
 10x60cm 3.9x23.6"  
 icestorm LGBS240 0200  
 sandstorm LGBS220 0200  
 tropicalstorm LGBS230 0200  
 thunderstorm LGBS200 0200  
 darkstorm LGBS250 0200



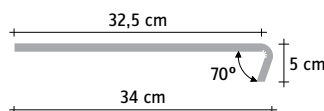
**ELEMENTO A ELLE CONTINUO** nat. rett.  
 15x30x5cm 5.9x11.8x2"  
 icestorm LG9S223 0510  
 sandstorm LG9S221 0510  
 tropicalstorm LG9S222 0510  
 thunderstorm LG9S220 0510  
 darkstorm LG9S224 0510



**GRADINO STEP** nat. rett.  
 60x60cm 23.6x23.6"  
 icestorm LGCS2R4 0610  
 sandstorm LGCS2R2 0610  
 tropicalstorm LGCS2R3 0610  
 thunderstorm LGCS2R0 0610  
 darkstorm LGCS2R5 0610



**GRADINO CONTINUO 60** nat. rett.  
 5x32,5x60cm 2x12.8x23.6"  
 icestorm LG9S226 1610  
 sandstorm LG9S227 1610  
 tropicalstorm LG9S228 1610  
 thunderstorm LG9S229 1610  
 darkstorm LG9S225 1610



**GRADINO CONTINUO ANGOLO SX** nat. rett.  
 5x32,5x32,5cm 2x12.8x12.8"  
 icestorm  
 sandstorm  
 tropicalstorm  
 thunderstorm  
 darkstorm

**GRADINO CONTINUO ANGOLO DX** nat. rett.  
 5x32,5x32,5cm 2x12.8x12.8"  
 LG9S231 1970  
 LG9S232 1970  
 LG9S233 1970  
 LG9S234 1970  
 LG9S230 1970

Tutti i gradini continui sono da posare esclusivamente in interno.  
 All steps are intended as "indoor use" only.  
 Tous les nez de marche sont à utiliser exclusivement à l'intérieur.  
 Alle Stufenplatten sind ausschließlich für die Verlegung im Innenbereich geeignet.  
 Todos los peldaños/huella son para colocación exclusivamente en interior.



**DARKSTORM 60x60cm - 23.6x23.6"**





# STORM

## gres smaltato a massa colorata GL

colored-body glazed stoneware  
grès émaillé a masse colorée  
glasiertes Feinsteinzeug mit farbiger masse

## spessore 11mm / 9mm

thickness  
épaisseur  
stärke

|  | <b>CARATTERISTICHE TECNICHE*</b><br><b>TECHNICAL CHARACTERISTICS</b><br><b>CARACTÉRISTIQUES TECHNIQUES</b><br><b>TECHNISCHE EIGENSCHAFTEN</b>  | <b>metodo di prova</b><br><b>test method</b><br><b>methode d'essai</b><br><b>prüfmethode</b> | <b>fondi</b><br><b>plain tile</b><br><b>fond</b><br><b>unifliese</b>                         |
|--|--|--|--|
|    | <b>assorbimento d'acqua</b><br>water absorption<br>absorption d'eau<br>wasserabsorption  | iso 10545-3  | <b>conforme</b><br>compliant<br>conforme<br>gemäß  |
|    | <b>resistenza al gelo</b><br>frost resistance<br>résistance au gel<br>frostbeständigkeit   | iso 10545-12   | <b>resistente</b><br>resistant<br>résistant<br>beständig                                     |
|    | <b>resistenza alla flessione</b><br>bending strength<br>résistance à la flexion<br>beigefestigkeit   | iso 10545-4  | ≥ 50 N/mm <sup>2</sup><br>≥ 510 Kg/cm <sup>2</sup>   |
|    | <b>sforzamento di rottura (S)</b><br>breaking strength (S)<br>chargement de rupture (S)<br>bruchlast (S)   | iso 10545-4  | <b>spess./thick. 9 mm ≥ 1800 N</b><br><b>spess./thick. 11 mm ≥ 3000 N</b>                    |
|    | <b>resistenza all'abrasione superficiale</b><br>resistance to superficial abrasion<br>résistance à l'abrasion superficielle<br>oberflächliche reibungsbeständigkeit  | iso 10545-7  | <b>pei5</b> (sandstorm, thunderstorm,<br>tropicalstorm, icestorm)<br><b>pei4</b> (darkstorm) |
|  | <b>dilatazione termica lineare</b><br>thermal expansion<br>dilatation thermique linéaire<br>thermische dilatation  | iso 10545-8  | α ≤ 7 × 10 <sup>-6</sup> °C <sup>-1</sup>  |
|  | <b>resistenza agli sbalzi termici</b><br>thermal shock resistance<br>résistance aux chocs thermiques<br>temperatur wechselbeständigkeit  | iso 10545-9  | <b>resistente</b><br>resistant<br>résistant<br>beständig                                     |
|  | <b>resistenza attacco chimico</b><br>chemical resistance<br>résistance chimique<br>chemischee beständigkeit  | iso 10545-13   | <b>gla, gha resistente</b><br>resistant<br>résistant<br>beständig                            |
|  | <b>resistenza chimica a prodotti di uso domestico</b><br>house hold chemicals resistance<br>résistance aux agents chimique<br>des produits pour emploi domestique<br>chemische beständigkeit gegen haushalt putzmittel | iso 10545-13   | <b>ga resistente</b><br>resistant<br>résistant<br>beständig                                  |
|  | <b>resistenza alle macchie</b><br>stain resistance<br>résistance aux taches<br>fleckenbeständigkeit  | iso 10545-14   | <b>5 resistente</b><br>resistant<br>résistant<br>beständig                                   |
|  | <b>resistenza allo scivolamento</b><br>slip resistance<br>résistance au glissement<br>rutschfestigkeit   | din 51130  | <b>r9</b> (naturale)   |
|  | <b>resistenza allo scivolamento</b><br>slip resistance<br>résistance au glissement<br>rutschfestigkeit   | din 51097  | <b>C (A+B+C)</b>   |
|  | <b>coefficiente di attrito dinamico</b><br>dynamic friction coefficient<br>coefficient de friction dynamique<br>dynamischer reibungskoeffizient  | b.c.r.   | μ > 0,40   |
|  | <b>coefficient of friction (C.O.F.)</b><br>coefficiente attrito statico  | astm c1028   | wet/dry ≥ 0.60   |
|  | <b>stonalizzazione</b><br>shading<br>denuançage<br>spielfarbig   |  | <b>V4</b>  |



**IMPIEGHI**  
**USES**  
**EMPLOI**  
**ANWENDUNGSBEREICHE**

|  |  |   |  |
|--|--|---|--|
|  | <b>alberghi</b><br>hotels<br>hotels<br>hotels  |  | <b>locali pubblici</b><br>public spaces<br>lieux publics<br>öffentliche bereiche |
|  | <b>abitazioni</b><br>housing<br>maisons<br>wohnbereiche  |  | <b>aeroporti</b><br>airports<br>aéroports<br>flughafen                           |
|  | <b>bar - ristoranti</b><br>bar - restaurants<br>bar - restaurants<br>cafés - restaurants, gasthäuser |  | <b>centri commerciali</b><br>malls<br>centre commerciaux<br>einkaufszentren      |
|  | <b>negozi</b><br>shops<br>magasins<br>geschäfte  |  | <b>stazioni</b><br>train stations<br>gares<br>bahnhöfe                           |

**IMBALLAGGI**  
**PACKING**  
**EMBALLAGE**  
**VERPACKUNGEN**

| articolo               | scatola     |             |    | europallet |      |    |            |        |
|------------------------|-------------|-------------|----|------------|------|----|------------|--------|
|                        | pz.         | mq          | kg | scat.      | mq   | kg |            |        |
| fondo                  | 60x60       | 23.6x23.6   | 4  | 1,44       | 35,0 | 24 | 34,6       | 840,0  |
| fondo                  | 30x60       | 11.8x23.6   | 8  | 1,44       | 34,9 | 32 | 46,1       | 1116,8 |
| fondo                  | 30x30       | 11.8x11.8   | 11 | 0,99       | 22,9 | 40 | 39,6       | 917,2  |
| fondo                  | 30x60,4     | 11.8x23.8   | 9  | 1,63       | 32,4 | 32 | 52,2       | 1036,8 |
| fondo spess 11         | 60x60       | 23.6x23.6   | 4  | 1,44       | 35,0 | 24 | 34,6       | 840,0  |
| fondo spess 9          | 45x45       | 17.7x17.7   | 7  | 1,42       | 28,0 | 52 | 73,7       | 1456,0 |
| fondo spess 9          | 30x30       | 11.8x11.8   | 15 | 1,35       | 26,2 | 40 | 54,0       | 1048,0 |
| link                   | 30x60       | 11.8x23.6   | 4  | 0,72       | 17,0 | 40 | 28,8       | 680,0  |
| mosaico 3              | 30x30       | 11.8x11.8   | 5  | 0,45       | 9,2  | 60 | 27,0       | 552,0  |
| mosaico 10             | 30x30       | 11.8x11.8   | 5  | 0,45       | 12,5 | 60 | 27,0       | 750,0  |
| muretto                | 30x60       | 11.8x23.6   | 4  | 0,72       | 15,9 | 30 | 21,6       | 477,0  |
| muretto 3D             | 15x60       | 5.9x23.6    | 8  | 0,72       | 17,8 | 30 | 21,6       | 534,0  |
| battiscopa             | 10x60       | 3.9x23.6    | 12 | 7,2 m.l.   | 18   | 50 | 360,0 m.l. | 900,0  |
| gradino                | 60x60       | 23.6x23.6   | 4  | 1,44       | 35   | 24 | 34,6       | 840,0  |
| elemento elle continuo | 15x30x5     | 5.9x11.8x2  | 8  | 0,36       | 8,8  | 28 | 10,1       | 246,4  |
| gradino continuo       | 5x32,5x60   | 2x12.8x23.6 | 4  | 0,78       | 19,2 | 14 | 10,9       | 268,8  |
| ang. gradino continuo  | 5x32,5x32,5 | 2x12.8x12.8 | 2  | 0,21       | 5,5  | 14 | 3,0        | 76,4   |



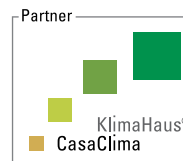
iso 14001



iso 9001



emas



casaclima \*\*\*



leed\*



marchio CE



leed\*\*

**\* LEED**

Lea Ceramiche, tramite la holding Panariagroup Industrie Ceramiche S.p.A., è socio ordinario del Green Building Council e del GBC Italia. Through Panariagroup Industrie Ceramiche S.p.A., Lea Ceramiche is an ordinary member of the Green Building Council and the GBC Italia. Par le biais de Panariagroup Industrie Ceramiche S.p.A., Lea Ceramiche est membre ordinaire du Green Building Council et du GBC Italia. Lea Ceramiche, durch die Holding Panariagroup Industrie Ceramiche S.p.A., ist ordentliches Mitglied von dem Green Building Council und dem GBC Italien. Lea Ceramiche, a través del holding Panariagroup Industrie Ceramiche S.p.A., es miembro afiliado del Consejo Construcción Verde y del Consejo Construcción Verde de Italia.

**\*\* LEED**

Il contenuto di materiale riciclato "pre-consumo" della serie Storm è del 40%, come certificato da ente esterno qualificato (certificato disponibile sul sito [www.ceramichelea.it](http://www.ceramichelea.it)). Storm is produced with 40% of pre-consumer materials, as certified by a qualified external company (certificate available on the website [www.ceramichelea.it](http://www.ceramichelea.it)).

**\*\*\* CASACLIMA**

Lea Ceramiche, tramite la holding Panariagroup Industrie Ceramiche S.p.A., ha ottenuto la certificazione Partner Casaclima. Through Panariagroup Industrie Ceramiche S.p.A., Lea Ceramiche has obtained the Partner Casaclima certification. Par le biais de Panariagroup Industrie Ceramiche S.p.A., Lea Ceramiche a obtenu la certification Partner Casaclima. Lea Ceramiche, durch die Holding Panariagroup Industrie Ceramiche S.p.A., hat die Bescheinigung als Partner Casaclima bekommen. Lea Ceramiche, a través del holding Panariagroup Industrie Ceramiche S.p.A., ha obtenido la certificación Partner Casaclima.

**LEGENDA CODICI  
CODE NOTICE  
LÉGENDE CODES  
ERLÄUTERUNG DES ARTIKELS**

**ADIMEMBER**



**CODICE ARTICOLO**

L000000

**PRODUCT CODE**

L000000

**CODE ARTICLE**

L000000

**ARTIKEL NUMMER**

L000000

**CODICE PREZZO**

0000 materiale venduto al mq

0000 materiale venduto al pz

**PRICE CODE**

0000 item sold by sqmt

0000 item sold by piece

**CODE PRIX**

0000 article vendu au m<sup>2</sup>

0000 article vendu a la piece

**PREIS ARTIKEL NUMMER**

0000 artikel qm weise

0000 artikel stückweise





# STORM

# LEA

CERAMICHE

## LEA CERAMICHE

Via Cameazzo, 21  
41042 Fiorano Modenese  
Modena Italy

Tel +39 0536 837811  
Fax +39 0536 830326  
info@ceramichelea.it  
www.ceramichelea.com

Panariagroup Industrie Ceramiche S.p.A.

## SHOWROOM LEA CERAMICHE

Via Durini, 3  
20122 Milano

Tel +39 02 76011406  
showroom\_milano@ceramichelea.it

## LEA NORTH AMERICA, LLC

800 Clanton Road, Suite N  
Charlotte, NC 28217

Tel +1 704 522 6300  
Fax +1 704 522 6080  
info@leausa.us